

Research and Education in the Mountain Regions of Greece

Stella Giannakopoulou

Dr Architect Engineer



Aristotle University of Thessaloniki (AUTH)

- *Regional analysis and planning*
- *Urban analysis and planning*
- *Applications of cadastre*

Metsovio Interdisciplinary Research Center (MIRC) of the National Technical University of Athens

- *Introduction to the Environment and the Society of Mountainous Areas*
- *Environmental Economics: Implementation on Development Issues of Mountainous Areas*

The M.I.R.C. and the MSc in Metsovo

- Greece is among the most mountainous countries in Europe (78%).
- Absence of mountains at academic level.
- NTUA founded the
- **Metsovio Interdisciplinary Research Center**, in 1993 and the
- **MSc “Environment and Development of Mountainous Areas”**, in 2008.

View of the M.I.R.C. in Metsovo



Where are we?

Epirus

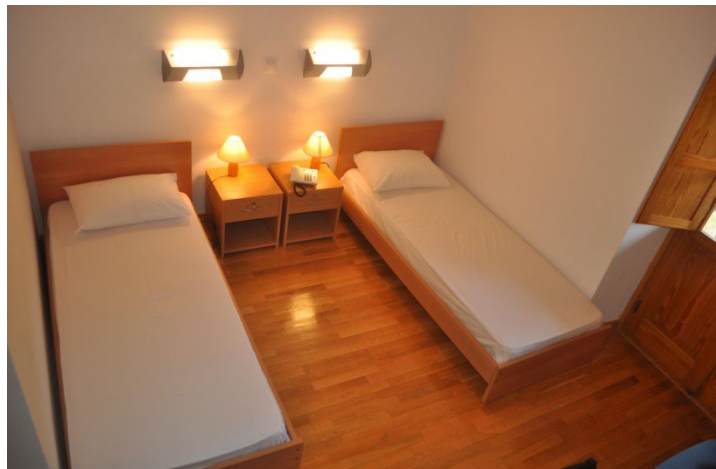
● **Metsovo**

a mountainous town
1,200m
3,500 residents



Metsovo





Building facilities in Metsovo



Courses of the MSc

Winter
semester

- Introduction to the Mountain Regions' Environment and Society
- Geographic Information Systems and Mountain Environment
- Introduction to the Sciences of the Development and the Environment
- Methods and Techniques of Mountain Environments' Observation and Monitoring
- Methodologies for Environmental Problems Management

Spring
semester

- Aquatic Environment and Development
- Introduction to the Environmental Protection Technologies
- Spatial, Economic and Legal Dimensions of Development and Environment of Mountain Areas
- Environmental Economics: Applications in Mountain Regions' Development Issues
- Cadastre, Land use and Policy
- *Diploma Thesis*

What is new and innovative about the MSc?

- Training on real problems.
- Interdisciplinary approach.
- Experimental approach. **Students don't just *learn* about mountains, they *live* in them.**
- Systematic dissemination of the results.
- Internationalist character.



